



City of Newport
REQUEST FOR CITY COUNCIL ACTION

To: Mayor Jeanne-Marie Napolitano & Members of the City Council;
From: Joseph J. Nicholson, Jr., Esq., City Manager
Date: January 5, 2022
Subject: Award of Contract - RFP for Redrawing of City Council Ward and Precinct Lines
Staff Presentation: Tracy A. Nelson, Canvassing Clerk

RECOMMENDATION:

The Newport Canvassing Authority recommends the award of contract for Redistricting & Reapportioning Services to ARCBridge Consulting & Training Inc. in the amount not to exceed \$17,990.00.

BACKGROUND AND FINDINGS:

The Canvassing Authority, under direction of the City Council, is required by Section 3-7 of the Charter of the City of Newport to redraw the ward lines in each year when the General Assembly shall re-determine the state representative and senatorial districts.

Request for Proposals (RFP) #22-014 Redistricting & Reapportioning Consulting Services was issued December 13, 2021 with a deadline of December 28, 2021 2:00 PM. Two proposals were received in response to the RFP. One from ArcBridge Consulting & Training Inc. and the other from Election Data Services.

The proposals were evaluated by Canvassing and Finance staff. The proposals and evaluations were provided to the Canvassing Authority which approved a recommendation to award the contract to ArcBridge Consulting & Training Inc. as determined to be the most beneficial to the City.

The services were budgeted in Account #11-050-8120-50225 for FY2022 in the amount of \$25,000.

PREVIOUS LEGISLATIVE ACTION

Resolution #2021-84

FISCAL IMPACT

Currently Budgeted (Account 11-050-8120-50225) Requires additional appropriation No Fiscal Impact

SUPPORTING DOCUMENTS

- Resolution
- Memorandum from the Canvassing Clerk on behalf of the Canvassing Authority
- RFP Evaluation
- RFP Responses

Finance Dept. Review: 1/19/22 Date By: LS (if applicable)

THE CITY OF NEWPORT

**RESOLUTION
OF THE
COUNCIL**

No.

WHEREAS: Pursuant to Section 3-7 – WARDS of the Charter of the City of Newport, the Newport Canvassing Authority shall, under the direction of the City Council, redraw the ward lines in each year when the General Assembly shall re-determine the state representative districts and senatorial districts; and

WHEREAS: City Council Resolution 2021-84 resolved that a request for proposals be prepared and issued by the Canvassing Authority; and

WHEREAS: two responses were received and evaluated in response RFP #22-014 issued December 13, 2021 with the deadline of December 28, 2021 2:00 PM.

WHEREAS: The lowest qualified bid was received by ARCBridge Consulting & Training Inc.

NOW THEREFORE, BE IT RESOLVED: That the Newport City Council award the contract for Redistricting & Reprecincting Consulting Services to ARCBridge Consulting & Training Inc. in an amount not to exceed \$17,990.00; and the Mayor is authorized to execute the contract for same on behalf of the City, subject to favorable review by the City Solicitor.

IN COUNCIL
READ AND PASSED

Laura C. Swistak
City Clerk



CITY OF NEWPORT, RHODE ISLAND
Canvassing Authority
City Hall - 1st Floor
43 Broadway
Newport, Rhode Island 02840
Phone: (401) 845-5384 / Fax: (401) 848-5750
www.cityofnewport.com

MEMORANDUM

Date: January 14, 2022
From: Newport Canvassing Authority
To: Honorable Newport City Council
Re: RFP #22-014 *Redistricting and Reprecincting Consulting Services*

The Canvassing Authority received two responses to the above Request for Proposals in advance of the December 28, 2021 2:00 PM deadline. One was from ARCBridge Consulting & Training Inc., the vendor that conducted the work for the city in 2011; and the other from Election Data Services, the vendor currently conducting the work for the redrawing of the Congressional, Senatorial, and House Districts for the Reapportionment Commission appointed by the General Assembly.

The proposals were evaluated independently by the Canvassing Clerk and a member of the Finance Department. I have provided copies for your review. Upon completion of the evaluations for experience and qualifications, the sealed price sheets were then opened. The pricing is as follows: ARCBridge Consulting & Training \$17,990; Election Data Services \$37,500.

The proposals and evaluations were then forwarded to the Canvassing Authority for consideration at their January 4, 2022 meeting. After review and discussion, a **motion** was made and unanimously approved by the Canvassing Authority to recommend the City Council award the contract for Redistricting and Reprecincting Consulting Services to ARCBridge Consulting & Training in an amount not to exceed \$17,990; lacking evidence to support award to the high bidder, at over double the cost, and exceeding the budgeted amount of \$25,000.

On behalf of the Newport Canvassing Authority,

Tracy A. Nelson, CMC
Canvassing Clerk

City of Newport

RFP Tabulation - # 22-014

Redistricting and Reprecincting Consulting Services

(Canvassing)

ARCBridge Consulting & Training, Inc., Sterling, VA

Election Data Services, Inc., Manassas, VA

RFP Closed: December 28, 2021 @ 2:00PM

City of Newport
RFP#22-014
Redistricting and Reprecincting Consulting Services

Evaluator # 1

12/29/2021

Evaluation Criteria

The initial review will determine if the proposal submitted is complete, and meets the requirements of the RFP. Proposals found to be technically or substantially non-responsive at any point in the evaluation process may be rejected and not considered further.

Evaluation Criteria	Weight	ARCBridge Consulting & Training, Inc.	Election Data Services, Inc.
1. Prior like experience and qualifications	40%	25	40
2. References	30%	25	40
3. Cost * Budget ‡ 28,000	30%	30 17,990	20 31,500
Total Weight:		80	100

City of Newport
RFP#22-014
Redistricting and Reprecincting Consulting Services

Evaluation Criteria

The initial review will determine if the proposal submitted is complete, and meets the requirements of the RFP. Proposals found to be technically or substantially non-responsive at any point in the evaluation process may be rejected and not considered further.

Evaluator # 2

12/29/2021

Evaluation Criteria	Weight	ARCBridge Consulting & Training, Inc.	Election Data Services, Inc.
1. Prior like experience and qualifications	40%	<i>40%</i>	<i>35%</i>
2. References	30%	<i>30%</i>	<i>25%</i>
3. Cost	30%	<i>30%</i> <i>17,990</i>	<i>20%</i> <i>31,500</i>
	Total Weight:	<i>100</i>	<i>80</i>

** Budget \$25,000*

ARCBRIDGE CONSULTING & TRAINING INC.



RECEIVED

DEC 28 2021

CANVASSING DEPT
CITY OF NEWPORT, RI

**Response to RFP #22-014 Redistricting & Reprecincting
Consulting Services**

12/28/2021

2:00 PM



Eric Mulligan, Purchasing Agent
Purchasing Office,
City Hall, 43 Broadway,
Newport, R. I. 02840

21515 Ridgetop Circle, Suite 290, Sterling VA 20166; www.arcbridge.com 703-834-6511 703-834-6514(f) Attn: Sam Mathur, sam@arcbridge.com, x102

Contents

Contents	3
1. Introduction - ARCBridge's Background/History.....	7
ARCBridge REDISTRICTING EXPERIENCE.....	7
2. Technical Approach and Services to be provided	10
2.1 - Utilize the latest mapping technology and the existing city boundaries.....	10
2.1.1 Census Data Review /Compilation and Analysis	10
2.2 – Work with the City Staff	10
2.3 Align Ward Boundaries.....	10
2.4 Align Precinct Boundaries	11
2.5 Prepare Draft Maps and Reports	11
2.6 Prepare Draft Maps and Reports	11
2.7 Prepare Deliverables for the state.....	11
2.8 Prepare a Detailed Map showing all boundaries	12
2.9 Prepare a statistical analysis of the newly adopted wards and precincts	12
3. Proposed Team.....	13
4. References.....	14
5. Sample Maps and Reports.....	15
6. Anticipated Time Frame.....	17

12/21/21



21515 Ridgetop Circle,
Suite 290
Sterling VA 20166

Purchasing Office,
City Hall, 43 Broadway,
Newport, R. I. 02840

Dear Purchasing Agent,

ARCBridge Consulting & Training, Inc. is pleased to offer its response to RFP #22-014 Redistricting & Reprecincting Consulting Services.

I, Sam Mathur, the CEO of ARCBridge have full authority to represent and negotiate contracts on behalf of ARCBridge. You can contact me directly for any clarifications or questions regarding our submittal. My contact information is given below –

Sam Mathur
sam@arcbridge.com
ARCBridge Consulting & Training, Inc.
203 Elden Street, Suite 303
Herndon, Virginia 20170
(703) 834-6511 x102 direct line (703) 834-6514 fax

We are really excited to respond to this solicitation as we have successfully provided redistricting services to the City of Newport in 2011 and several local governments across the nation and for the **City of Pawtucket, City of East Providence and the City of Central Falls in RI**. ARCBridge has already been selected by the City of East Providence and the City of Pawtucket RI for Redistricting Services in 2022. ARCBridge has the experience that the city is looking for and currently we have the staff available to provide you all the services in a very timely fashion. ARCBridge has been in business for over 25 years and we strive for excellence in all our projects. I encourage you to call our references and talk to them about our reliability and our passion to get things done in time and with guaranteed results.

ARCBridge has been working with redistricting and census data for over 25 years. Our redistricting team is led by Ms. Priti Mathur, a GIS professional with 23 years of work experience in redistricting and over 5 years direct working experience at the US Department of Justice, Civil Rights Division, where redistricting plans submitted by state and local governments are evaluated. She has worked closely with civil rights attorneys and helped in redistricting plan evaluations as well as working with organizations across the nation to help create redistricting plans. Ms. Mathur also has over 20 years' experience working with Bureau of Census data, especially PL94-171 data used in redistricting.

We have read all the RFP requirements in detail and have the required qualifications, experience and staff availability to perform the tasks soon after the award.

We use ArcGIS /ArcMAP 10 and DISTRICTSolv, an ArcGIS extension to geocode addresses, create the ward and precincts and produce maps and reports.

We have been able to create plans with very low maximum deviations even under 1%. All our staff is well-versed in ArcGIS, census data and redistricting principles.

Please feel free to contact us directly with any questions. We look forward to the possibility of working with you on this project in the near future.

Sincerely,

Sam Mathur

Sam Mathur

sam@arcbridge.com

ARCBridge Consulting & Training, Inc.

21515 Ridgetop Circle, Suite 290

Sterling VA 20166

(703) 834-6511 x102 direct line (703) 834-6514 fax





1. Introduction - ARCBridge's Background/History

Incorporated in 1994, ARCBridge Consulting & Training Inc. (ARCBridge/ ARCBridge Consulting), is a Virginia-based, woman-owned business, with its headquarters in Sterling VA in the Washington DC Metro Area. ARCBridge has provided redistricting and general mapping services nationwide to a wide spectrum of clients to include special districts, State, Counties, Cities, Towns and School Districts. Having been in business for over 25 years, ARCBridge has extensive experience in Census data, GIS, and redistricting.

Our principal and proposed Technical Manager, Ms. Priti Mathur, has a MS in Geography (Virginia Tech) with a concentration in Geographic Information Systems (GIS). She has over 25 years of experience working with census data and redistricting, and 5 years' experience working at the US Department of Justice Civil Rights Division, Voting Section where redistricting plans are evaluated.

ARCBridge REDISTRICTING EXPERIENCE

ARCBridge Employees have been working with Census data and redistricting since 1990. This is their 4th cycle of redistricting –

<ul style="list-style-type: none">•Ms. Mathur worked at DOJ•Civil Rights Division, Voting Section <p>1990 Census</p> 	<ul style="list-style-type: none">•ARCBridge Team worked at•Bureau of Census, Population Division•Quality Control of Redistricting Data <p>2000 Census</p> 	<ul style="list-style-type: none">•ARCBridge Developed DISTRICTSolv for Redistricting•Redistricting Services Nationwide <p>2010 Census</p> 	<ul style="list-style-type: none">•We are ready to serve our existing clients and many new ones <p>2020 Census</p> 
---	--	---	--

For 2020 Census redistricting, ARCBridge is ready with its hardware, software and spatial data from the Bureau of Census. The spatial data was released in February while the PL94-171 data was released in August and has been delayed due to the pandemic. This redistricting data, is usually released in April.

Our clients span from Alaska to Florida and California to the East Coast. Some of our current clients are listed below:

San Diego Community College District (SDCCD):

ARCBridge has been selected by SDCCD for the 2021 redistricting cycle. Work is in progress.

Los Angeles Unified School District: ARCBridge is providing redistricting services to Los Angeles Unified School district for the 2021 redistricting cycle

Metropolitan Community College Kansas City MO.- Redistricting services 2021

St Johns School District FL. And St. Johns County School Board - Redistricting services 2021

Los Angeles County CA. Demography Services 2021

Miami-Dade County FL Redistricting Services 2021

Stafford County Public Schools (SCPS)- Virginia: ARCBridge provided school attendance area redistricting to SCPS in 2018-2019

Other clients:

City of New Haven CT-- ARCBridge worked with the City Council of New Haven to update their 30 wards after 2010 Census. ARCBridge developed several plans for the City Council including an alternate plan creating a new district in the eastern side of the city and eliminating a low-population district on the west side of the city. ARCBridge used ArcGIS, DISTRICTSolv and Census 2010 demographic and geographic data. Ms. Mathur led the Redistricting Team.

San Diego Unified School District-- ARCBridge provided redistricting assistance to the San Diego Unified School District for their school board. We have processed their data, developed 5 alternative plans, have attended their public hearings and the committee selected one of the plans with less than 1% deviation. The plan was then presented to the board and was unanimously accepted. We got great reviews for our work. Please see detailed project description below.

County of Santa Barbara, CA - ARCBridge has assisted the County of Santa Barbara in creating their districts. ARCBridge processed the PL94-171 data and the TIGER shapefiles and provided them with a ready to use data sets. ARCBridge provided them with DISTRICTSolv extension and training in redistricting principles and creating their districts using total population and other demographic variables.

Golden Triangle Planning and Development District, Inc. MS-- ARCBridge is supporting the redistricting services provided by the Golden Triangle Planning and Development District in MS. We provided DISTRICTSolv software for redistricting. ARCBridge processed the PL94-171 data and the TIGER shapefiles and provided them with a ready to use data sets for Choctaw, Clay, Noxubee, Oktibbeha, Webster, and Winston counties. ARCBridge provided them with DISTRICTSolv extension and training in redistricting principles and creating their districts using total population and other demographic variables.

Metropolitan Community College MO-- The MCC is made of 12 school districts and 4 counties. ARCBridge compiled the data and held three public meetings to gather input on how the 3 alternative plans will be drawn. The meetings were scheduled in July and August

2011. All work was done using PL94-171 census demographic data and TIGER shapefiles within the ESRI ArcGIS framework. The committee voted on one of the plans as their final districts. The final plan was accepted by the MCC Board. ARCBridge provided large E-Scale maps and walking descriptions for each district.

City of Pawtucket, Rhode Island- ARCBridge assisted the City in redrawing their districts based on the Census 2010 population. We provided them with an initial report based on existing districts and then created alternative plans. We then attended public meetings to help them select a plan which met the goals of the City and the Voting Rights Act of 1965.

Boone County MO - ARCBridge is assisting Boone County MO with their voting districts and registered voter files. As each precinct boundary is adjusted, the voter registration file is updated with the new district information. The updated voter registration file is exported in a text delimited file, which is then imported into their voter database.

Here are some other clients supported by ARCBridge-

Client Name	Services Provided	Census 2010 Population
City of Newport RI	Redistricting and Reprecincting	24,672
City of East Providence RI	Redistricting and Reprecincting	47,037
City of Central Falls RI	Redistricting and Reprecincting	19,376
Smithfield RI	Redistricting and Reprecincting	21,430
Boone County MO	Redistricting and Reprecincting	162,642
Davidson County TN	Redistricting Software & Service	626,681
Jefferson County CO	Reprecincting	582,881
Campbell County VA	Redistricting Software & Service	54,842
Bedford County VA	Redistricting Software & Service	68,676
Nelson County VA	Redistricting Software & Service	15,020
Roanoke VA	Redistricting Software & Service	92,376
City of Baltimore MD	Redistricting Software & Service	620,961
Clinton County MI	Redistricting Software & Service	75,382
Franklin County VA	Redistricting Software & Service	56,159
Greenwood County SC	Redistricting Software & Service	69,661
City of Newport News VA	Redistricting Software & Service	24,672
Kenai Peninsula AK	Redistricting Software & Service	55,400
Orange County FL	Redistricting Software & Service	1,145,956
Rockingham County VA	Redistricting Software & Service	76,314
City of Augusta-Richmond County GA	Redistricting Software & services	195,844
Gloucester County VA	Redistricting Software and Services	36,858
Prince Edward County VA	Redistricting Software and Services	23,368

2 Technical Approach and Services to be provided

ARCBridge team members have worked at the US DOJ Civil Rights division and have knowledge and experience of the Voting Rights Act requirements. Here are the tasks that our team will perform -

2.1 - Utilize the latest mapping technology and the existing city boundaries

ARCBridge will use ArcGIS 10.6/8 and DISTRICTSolv 2021 to review existing ward and precinct boundaries, and adjust them to comply with redistricting and reprecincting requirements based on 2020 Redistricting data. ARCBridge understands that the city has 3 wards and 9 precincts.

2.1.1 Census Data Review /Compilation and Analysis

ARCBridge will download the PL94-171 data for Census 2020 for the State of Rhode Island and the TIGER shapefiles for the City of Newport RI. The Shapefiles will be clipped using the City boundary. ARCBridge will process the PL94-171 dataset and will assign meaningful names to the population fields. The PL data will be joined with the geography files to create files ready to be used for redistricting.

The PL data will have the following information -

Total	Voting Age
Total Population	Total Voting Age Population
Hispanic	Voting Age Hispanic
Non Hispanic White	Voting Age White
Non Hispanic Black	Voting Age Non Hispanic Black
Non Hispanic Asian	Voting Age Non Hispanic Asian
Non Hispanic Hawaiian/Pacific Islander	Voting Age Non Hispanic Hawaiian/Pacific Islander
Non Hispanic Native Americans	Voting Age Non Hispanic Native Americans
Non Hispanic Other	Voting Age Non Hispanic Other
Non Hispanic Persons of 2 or more Races	Voting Age Non Hispanic Persons of 2 or more Races

2.2 - Work with the City Staff

ARCBridge will work with the city staff to obtain ward and precinct boundaries in shapefile format. We will use the redistricting and reprecincting criteria as defined in the City Charter.

2.3 Align Ward Boundaries

The city will provide ARCBridge with their existing wards, communities of interest/neighborhoods, incumbent point files and any other data that it would like to ARCBridge to use. ARCBridge will use 2020 Census data by census blocks to create existing wards and compute ideal population and maximum deviation. The ideal population will be computed by dividing the total population by the number of districts. Maximum deviation will be computed by calculating the difference between the least populated and the most

populated district. ARCBridge will use will use DISTRICTSolv which is compatible with the state redistricting software to adjust the ward boundaries so that the wards. ARCBridge will follow the standard redistricting criteria as listed below -

- **Population Equality:** All districts will be drawn such that they are as equal in population as possible. The maximum deviation will not be more than 10%.
- **The districts shall be compact and contiguous.** ARCBridge will follow block boundaries which in most cases are recognizable features like streets, waterways, railroads etc.
- **Minority populations will be fairly represented** such that the minorities will not be 'packed' into a district or 'cracked' into more than one district to dilute the minority voting power.
- **Communities of Interest** - If communities of interests are identified, ARCBridge will work to keep them in a district.

We will solicit input from the city on how the redistricting will be done and what areas of each district may be moved. Upon receiving input from the city, ARCBridge will prepare preliminary redistricting plans and share them on-line with the city staff. ARCBridge will prepare a PowerPoint presentation describing the plans.

2.4 Align Precinct Boundaries

ARCBridge will obtain existing precinct boundaries from the City staff. Our team will follow the reprecincting criteria and will ensure that precincts are completely within wards and other boundaries and the number of registered voters per precinct is no more than 3000 and not less than 500.

2.5 Prepare Draft Maps and Reports

ARCBridge will prepare maps and reports and provide them in PowerPoint/pdf maps.

These files may be posted on the city's website for public comment.

Upon selection of a final plan, ARCBridge will provide a shapefile of the new ward boundaries, a block-equivalency file which is a digital file including all blocks and the wards that they are assigned to, and a written description of the boundaries.

2.6 Prepare Draft Maps and Reports

ARCBridge will attend two public meetings to present the draft maps.

2.7 Prepare Deliverables for the state

Upon approval of a final plan by the City Council, ARCBridge will prepare the following

- final street files index listing a new voting district, ward, congressional, senatorial and representative district assignments for address ranges in the city's registered voter files to be submitted to the Secretary of State's Elections Office.

2.8 Prepare a Detailed Map showing all boundaries

ARCBridge will prepare a detailed map, large e-size map in pdf format. The map will show street level detail and physical features and other data layers as identified by the city.

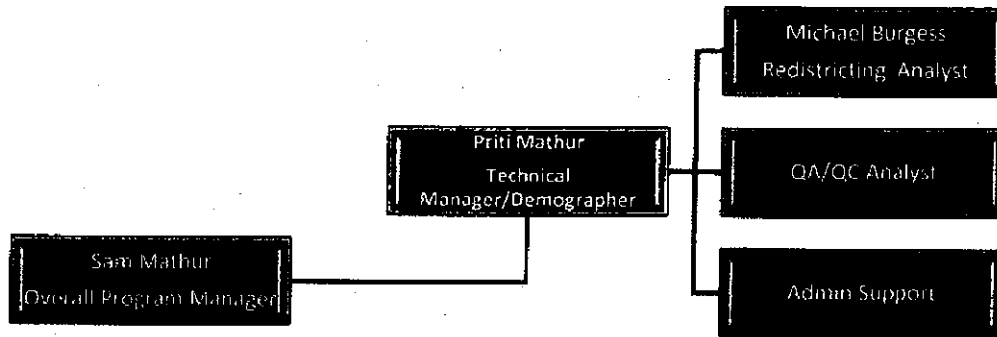
2.9 Prepare a statistical analysis of the newly adopted wards and precincts

ARCBridge will prepare summary and detailed reports for each ward; provide overall maximum deviation, deviation of the total population of the ward from the ideal population, total population and voting age population by race and ethnicity as available in the PL94-171 dataset.

ARCBridge will provide the number of registered voters in each precinct and description of the boundaries.

3 Proposed Team

ARCBridge will assign the following team to the project. All proposed members are ARCBridge Employees or consultant.



ARCBridge Team

Mr. Sam Mathur is a Principal at ARCBridge Consulting. Mr. Mathur has a MS. in Information Systems from Virginia Tech and has over 25 years of management and technical experience. Mr. Mathur has successfully managed most of ARCBridge projects over the last 20 years. Mr. Mathur will serve as the overall Program Manager. He will be responsible for all contractual matters. He has the overall responsibility for staff allocation, schedules, and responsibility to complete the project accurately on-time and within budget.

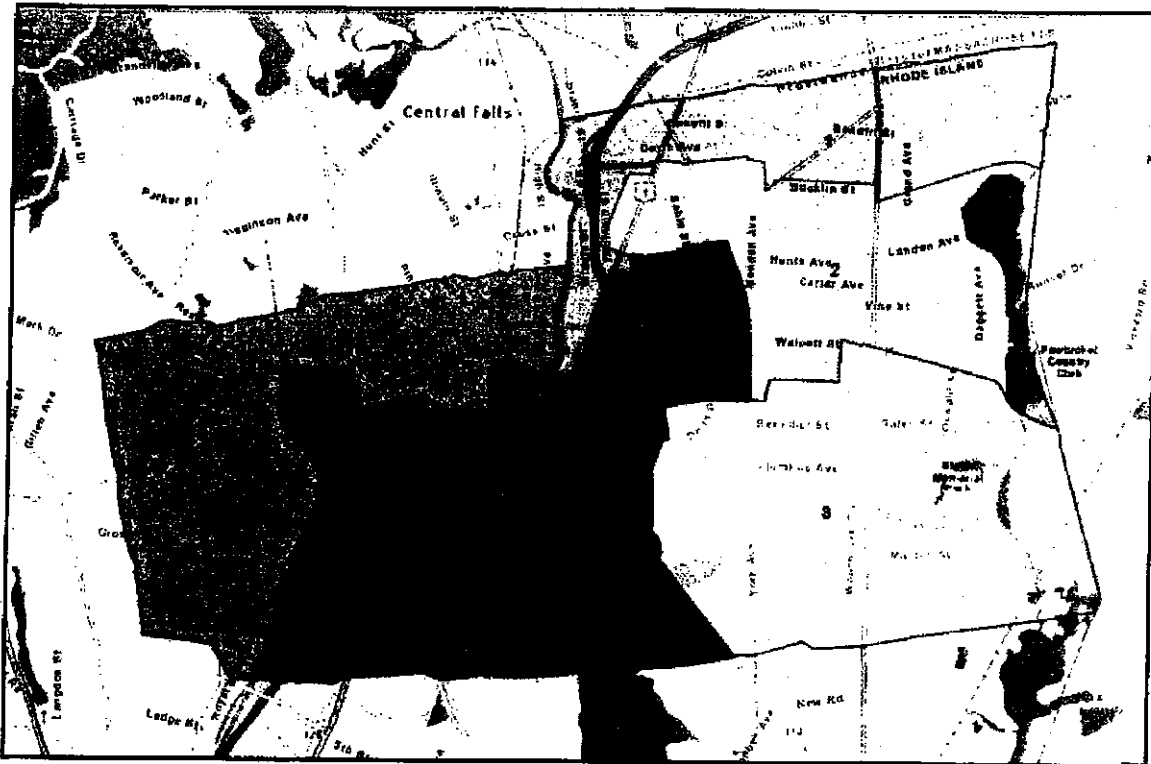
Ms. Priti Mathur is a Principal at ARCBridge Consulting. She has over 30 years of GIS consulting, application development and Database experience. She leads the Consulting & software development team at ARCBridge. She has extensive experience working with Census demographic and spatial data, leading the ARCBridge team in a nation-wide Metropolitan Areas delineation project conducted for the Bureau of Census, Population Division. Ms. Mathur has worked for over 5 years at the Department of Justice (DOJ), Civil Rights Division where she worked with DOJ Attorneys in helping them assess the redistricting plans submitted by jurisdictions. Ms. Mathur has presented several papers at professional conferences. She holds a Masters in Geography from Virginia Tech, Blacksburg, VA (1989). Ms. Mathur will lead the redistricting effort as ARCBridge's Technical Manager. All ARCBridge staff will be reporting to her. Ms. Mathur will be the technical point of contact. She will attend meetings, gather input and prepare and present alternate redistricting proposals.

Mr. Michael Burgess has over 10 years of experience in processing Census data, using ArcGIS 10.x and developing maps and reports. He will assist in processing the Census block files, PL94-171 data, preparing plans, maps and reports. He has assisted Ms. Mathur with all the redistricting projects in 2011 and the school and city redistricting projects from 2011 - 2020.

4. References

<u>Reference #1</u>	
Company Name:	City of Pawtucket RI
Contact Person: Telephone #:	Ken McGill KMcGill@pawtucketri.com Phone: (401) 722-1637 x207
Contract Dates: To	November 2011 –and now for 2022
Services Provided	Full Redistricting Services from on-site visits to drawing of alternate redistricting plans and precincts
<u>Reference #2</u>	
Company Name:	Prince William County VA
Contact Person: Telephone #:	Nicole Brown (703) 792-6992 nbrown@pwcgov.org
Contract Dates: To	August 2021 - present
Services Provided	Full Redistricting Services from on-site visits to drawing of alternate redistricting plans and creating precincts
<u>Reference #3</u>	
Company Name:	St. Johns County and St. Johns County School Board, FL
Contact Person: Telephone #:	<i>Nicole Cubbedge, AICP</i> Executive Director for Planning & Government Relations St. Johns County School District 40 Orange Street St. Augustine, FL 32084 904.547.7674 904.547.7675 (Fax) Nicole.Cubbedge@stjohns.k12.fl.us
Contract Dates: To	August-December 2021
Services Provided	Full Redistricting Services from on-site visits to drawing of alternate redistricting plans
<u>Reference #4</u>	
Company Name:	San Diego Unified School Districts
	Drew Rolands drowlands@sandi.net 619-260-5460
Contract Dates: To	July - December 2021
Services Provided	Full Redistricting Services & drawing alternate redistricting plans

5. Sample Maps and Reports



District	Population	Difference from Ideal	Deviation	District	Population	Difference from Ideal	Deviation
	11,257	-601	-5.07%		12,261	403	3.40%
	11,911	83	0.70%		11,881	23	0.19%

Total Population – 71,148 Ideal Population – 11,858 Maximum Deviation – 8.48%

City of Pawtucket RI – Existing Districts using 2010 Census Data

The following is an example of boundary descriptions as developed by ARCBridge.

Starting at JAMES MONROE HIGHWAY & PINE VIEW DRIVE
 South to County Boundary
 Northwest along County Boundary to County Boundary
 Northeast to JAMES MONROE HIGHWAY & MAYS LANE
 Northeast to THARP ROAD & TATUM ROAD
 North along THARP ROAD to JAMES MONROE HIGHWAY & THARP ROAD
 Northeast along JAMES MONROE HIGHWAY to JAMES MONROE HIGHWAY & PINE VIEW DRIVE

These reports were generated for the San Diego unified School district

District Summary

New Board Districts

District Count: 5
 Maximum Deviation: 1,820
 0.90%
 Average Deviation: 493
 0.24%
 Minimum Count: 202,388
 Maximum Count: 204,208

District	Load	Optimum	Deviation From Optimum	
			Deviation	As % of Optimum
A	202,388	203,058	-670	-0.33%
B	203,141	203,058	83	0.04%
C	202,867	203,058	-191	-0.09%
D	204,208	203,058	1,150	0.57%
E	202,687	203,058	-371	-0.18%

Total Population Percentages by Race and by District

District	White	Black	Hispanic	Asian	Other	Native	Other	Other	Other
A	15.19	49.00	2.99	27.86	0.26	0.43	0.29	3.97	
B	16.54	62.02	5.38	10.90	0.36	0.41	0.25	4.15	
C	15.53	69.23	2.84	8.46	0.29	0.26	0.38	3.01	
D	45.22	37.76	7.90	5.71	0.37	0.29	0.25	2.50	
E	45.35	12.44	17.12	21.09	0.21	0.80	0.20	2.79	

Voting Age Population Percentages by Race and by District

District	White	Black	Hispanic	Asian	Other	Native	Other	Other	Other
A	10.93	42.55	2.36	23.45	0.21	0.35	0.21	2.35	
B	11.60	52.25	4.07	8.95	0.28	0.33	0.16	2.32	
C	11.98	62.13	2.32	7.51	0.27	0.23	0.31	2.08	
D	30.86	35.31	6.52	4.96	0.34	0.24	0.20	1.87	
E	28.90	11.03	12.36	16.57	0.18	0.61	0.13	1.57	

6. Anticipated Time Frame

ARCBridge has the staff to complete the project within the time frame as specified by the City.

ARCBridge will complete the Ward boundary files within the required timeframe, provided existing boundary files are given to us soon after award.

Voting precincts will be drafted after the ward boundaries are finalized. ARCBridge will complete this task within the required timeframe and after the finalization of the ward boundaries.

Upon award, ARCBridge will register with the state of Rhode Island.

Proposal Sheet – RFP #22-014

Date: 12-28-2021

I/We Sam Mathur. the undersigned do hereby propose to furnish the City of Newport, Rhode Island with **Redistricting & Reprecincting Consulting Services**, in accordance with all terms and specifications contained herein.

1. \$ 17,990.00 Lump Sum

Please submit Proposal Sheet in separate, sealed envelope.

ARCBridge Consulting & Training Inc

NAME OF FIRM

S Mathur CEO

SIGNATURE & TITLE

21515 Ridgetop Circle Suite 290 Sterling VA 20166

ADDRESS

703-834-6511

TELEPHONE NUMBER

sam@arcbridge.com

E-MAIL ADDRESS

NOTE:

All vendors are responsible for insuring that no **addenda** have been added to the original RFP document.

RFP #22-014

List the Officers of your Corporation or Principals of your LLC

ARCBridge Consulting & Training Inc.

Complete Company Name

<u>Priti Mathur</u>	<u>President</u>
Name	Title/Officer/Position
<u>Sam Mathur</u>	<u>CEO</u>
Name	Title/Officer/Position
<u></u>	<u></u>
Name	Title/Officer/Position
<u></u>	<u></u>
Name	Title/Officer/Position
<u></u>	<u></u>
Name	Title/Officer/Position
<u></u>	<u></u>
Name	Title/Officer/Position
<u></u>	<u></u>
Name	Title/Officer/Position

Election Data Services

6171 Emerywood Court
Manassas, Virginia 20112

RECEIVED

DEC 28 2021

To: Newport City Council
From: Kimball W. Brace, President
Election Data Services, Inc.

CANVASSING DEPT
CITY OF NEWPORT, RI

202 789.2004 tel. or
703 580.7267
703 580.6258 fax
Info@electiondataservices.com

Kimball W. Brace
President

Date: December 27, 2021

Subject: Bid for RFP 22-014 Redistricting & Reprecincting Consulting Services

This proposal describes the approach that Election Data Services Inc. will utilize to satisfy requirements of the scope of work outlined by the request for proposals (RFP #22-014) for redistricting and reprecincting services. Those requirements call for mapping software and geographic, demographic, and election databases to redraw ward lines and create a new plan of city wards of nearly equal population. The proposed mapping software is *AutoBound EDGE*, the same software acquired by the General Assembly for legislative redistricting. The *AutoBound EDGE* software will produce the maps and reports needed for presentation of ward boundary redistricting proposals to the City Council at meetings and public hearings.

The proposal is divided into five sections. The first two sections describe the redistricting databases and the services that Election Data Services will provide to develop a new city ward plan. The third section describes services to realign voting district boundaries with the new ward and legislative district boundaries and update the city's voter registry. The remaining sections outline the project timetable and describe Election Data Services' qualifications to undertake the project.

I. Redistricting Databases

Election Data Services will construct block-level geographic and demographic databases from the 2020 census TIGER/Line® and PL 94-171 Redistricting Data files. The election database will be constructed from returns and voting statistics maintained by the Rhode Island Secretary of State and the Newport Canvassing Authority. The General Assembly and the state's Redistricting Commission is contemplating whether prisoners at the ACI facility in Cranston would be reallocated to their home addresses. If that comes about and should the City of

"Experts in Elections  Redistricting & GIS"

Newport desire to also implement that policy, Election Data Services will be able to implement those adjusted numbers into the database. EDS is prepared to provide a briefing on the subject to the City Council before the final decision is implemented.

Geographic Database

The geographic database will include the new 2022 congressional, senatorial, and representative district boundaries, current city ward boundaries in Newport, and *points* identifying the residential addresses of incumbent members of the Newport City Council. Congressional and legislative boundary files will be obtained from the General Assembly. Ward boundaries will be created by digitizing paper maps if boundary files are not available. The congressional and legislative district boundaries will be used for reference to avoid the creation of “pockets” when drafting the new city ward plan. Pockets—small areas formed by intersecting legislative and town district boundaries—must function as separate voting districts if not eliminated, complicating election administration and driving up election costs. Because a new plan of new legislative boundaries will not likely be enacted by the General Assembly until mid-February 2002, the legislative district layers in the geographic database for ward redistricting will be updated as changes are made to the final legislative plan.

Demographic Database

The 2020 PL 94-171 file will provide demographic data for equalizing city ward populations. However, the 2020 PL file contains 288 data cells (columns) from a method for tabulating census responses that accounts for single and multi-race categories, and Hispanic/Latino and voting age identifications (VAP). To make the PL file less cumbersome to use, Election Data Services has developed alternative data tabulations that utilize guidelines issued by the U.S. Dept. of Justice and the Office of Management and Budget (OMB). These alternatives will be used for the ward redistricting project and will include basic tabulations by race alone (White, Black, Asian, American Indian, etc.) as well as tabulations for Hispanic and Non-Hispanic categories and selected multi-race combinations (e.g., Asian alone and Asian and White).

Election Database

The election database will be created by keypunching election returns and voting statistics for state and local elections conducted in Newport over the past decade, including returns for municipal offices. If available, electronic files of election

returns will be processed for the database in lieu of keypunching. Because election returns are reported for voting districts, the returns will need to be disaggregated to the census block-level for redistricting uses. The disaggregation process involves geocoding the city's registered voter file to allocate election returns among census blocks in the TIGER file.

II. Redistricting Services

The *AutoBound EDGE* redistricting software will be loaded onto a notebook computer with the redistricting databases so that onsite plan modeling assistance can be provided to the city council in Newport, pursuant to Section 3-7 of the Newport City Charter. While we are not certain about the state legislature's timetable at this point, we anticipate the work schedule will follow the following three-month timetable with plan drafting in January 2022, plan adjustments in February, and presentation of the final city ward plan to the Council in March 2022 for adoption.

Before plan drafting begins, Election Data Services will analyze the PL data, current city ward boundaries, and proposed senatorial and representative district boundaries. We would be happy to make a presentation to the City Council about our initial findings and suggested directions forward. Election Data Services will then interview individual Council members to develop a proposed ward plan for presentation to the City Council and the general public. Election Data Services' personnel will assist in the development and presentation of information at those public hearings (a minimum of two hearings). Supporting documentation consisting of population and geography reports (statistical analysis), large format city-wide maps, and small format maps of single wards, will be prepared for both the current and proposed city ward plans. Maps and reports for day-to-day redistricting operations will be produced in state, as we have a staff person (Mr. Ryan Taylor) who lives in Providence for the duration of state and local line drawing activities. Maps and reports for presentation to the Council and to the public will be produced in our Providence office and brought to Newport. After presentation of the draft plan, Election Data Services will make adjustments requested by the Council and general public to create the final city ward plan. A similar series of maps and reports will be produced to document the final city ward plan, along with official metes and bounds descriptions of each of the wards and precincts.

III. Voting District Mapping Services

After new city ward and legislative redistricting plans have been adopted, the Newport Canvassing Authority and its staff will have a very short timeframe of March and April, 2022 to realign voting district boundaries with the new ward and legislative district boundaries and update the State's Central Voter Registration System (CVRS) in order to reassign the city's registered voter file. Election Data Services has extensive experience with the street file in the CVRS in that we developed and maintained the original component for the Secretary of State. Election Data Services proposes to assist the Authority staff with this project using *PRECIS® Precinct Information System* software developed especially for this task. The PRECIS software will be loaded onto a notebook computer with a geographic database consisting of an enhanced version of the TIGER/Line file; boundaries of the new 2002 city wards and congressional, senatorial, and representative districts; and a geocoded registered voter file that allows addresses of voters in the city of Newport to be displayed as *points* on a digital map and counts for very small geographies. The Canvassing Authority, with Election Data Services' assistance will use the *voter points* to help determine where to relocate voting district boundaries. The PRECIS software will automatically tally number of voters in each voting district to facilitate compliance with Rhode Island's General Law Title 17, Chapter 11, Section 17-11-1 for a statutory minimum of 500 registered voters and a limit of 3,000 registered voters per precinct or voting district. After a new voting district plan has been drafted, Election Data Services will produce a series of reports and large and small-format maps for presentation of the proposed voting district plan to the City Council.

As the new voting district plan is developed, Election Data Services will work with the Canvassing Authority to update street information to ensure that streets are assigned to the correct voting district. The PRECIS software will generate a *street index* for this part of the project. After the new voting district plan has been approved, Election Data Services will generate new street file records for the Statewide Voter Registration System maintained by the Secretary of State's office. The street file will provide a new voting district, city council ward, and congressional, senatorial, and representative district assignments for address ranges in the registered voter file.

Bidder Qualifications

Election Data Services is the sole organization submitting this bid. No other persons or firms are involved as subcontractors or partners. The following is contact information for Election Data Services Inc. and Kimball W. Brace, the officer empowered to bind the firm to a contract.

Business Address Kimball William Brace, President
 Election Data Services, Inc.
 6171 Emerywood Court
 Manassas, VA 20112
Telephone (202) 789.2004
E-mail kbrace@aol.com

Prior Experience

Since 1979, Election Data Services, Inc. (E.D.S. Inc.), has been actively involved in many aspects of the redistricting process, having gone through four full census and redistricting cycles. We have been a consultant to many state and local governmental organizations around the nation, providing strategic advice and consulting on redistricting matters, coordinating the development of extensive databases used in the redistricting process, creating and assisting others with the creation of districting plans, and analyzing many aspects of districts and district configurations. Over the past four decades, Election Data Services, Inc.'s redistricting clients have come from more than half the states and members of our team been called upon to provide reports, expert witness testimony, and assistance to attorneys in more than 100 different court cases.

An example of Election Data Services, Inc.'s role in a jurisdiction's redistricting process is the State of Rhode Island, where the company has been responsible for coordinating all meetings and has testified at every meeting of their redistricting commission for the past three decades. In addition, it is our standard practice to meet with every state legislator of both parties, in both chambers, to review the member's district, its neighborhoods and the demographic characteristics of its voters. When the Census data is released, we conduct regional meetings around the state to review what the numbers mean for representation. We then work with legislative members, staff, and the general public to draw potential plan configurations. Plan alternatives are then taken to various parts of the state for further public input, in most instances in conjunction with the

redistricting commission. In Rhode Island, the commission makes recommendations to the Legislature, who ultimately passes the plan as a piece of legislation.

Election Data Services, Inc. has also had extensive experience in a number of the redistricting of a number of major metropolitan areas of the nation. Since 1980 we have assisted the City Council for the City of Chicago, IL in every redistricting each decade. This included creating the redistricting database, installing and utilizing redistricting software on local machines in city council chambers and working with councilpersons and staff to draft hundreds of redistricting plan concepts. This has also included working for the Cook County Board of Supervisors for their redistricting process for the past three decades. We also set up the redistricting operation for New York City in 1990 and worked with council members that decade in drafting and finalizing a redistricting plan. We were involved in testifying in the City of Los Angeles about their redistricting plan during the 1980s. A full set of all our redistricting involvement throughout the decades can be found in Kimball Brace's vita, which can be found at www.electiondataservices.com.

Between decades, Election Data Services has contracted with several states to perform work to update Census Bureau TIGER files and draw and adjust precinct boundaries for submission to the Bureau. This has included addresses matching statewide voter registration files to decipher where precincts are located. This has included on-going work in both Rhode Island and Illinois for each of the past three decades.

E.D.S. Inc. has been providing redistricting services since before the advent of GIS redistricting software and were uniquely placed when GIS was introduced into the process. We developed our own redistricting software for the 1990 round of redistricting which was used in numerous state and local redistricting projects. We continued developing GIS software applications to help state governments compile precinct configurations for submission to the Census Bureau under P.L. 94-171 (whereby, census data was compiled by precinct for use in redistricting). During the 2000 and 2010 redistricting process we developed our own analysis software and utilized both major redistricting software packages, including AutoBound.

Since the early 1990s, E.D.S., Inc. has studied and issued yearly reports on the apportionment process as new population estimates have been released by the

US Census Bureau and private demographic firms. We have become a staple for the press and others to cite when commenting on the impact of population shifts between different states. These reports can be found at our website: www.electiondataservices.com, under the "Research" tab. We have maintained a historical table back to 1789, along with decennial calculations conducted on Census data each decade from 1940 to current, as well as interim census estimates back to the early 1990s.

E.D.S. Inc. regularly collects election returns for every state in the nation. In 1992 we published a 500-page volume of county-level voter registration and voter turnout data, and election returns for the entire nation (*The Election Data Book: A Statistical Portrait of Voting in America, 1992* (Bernan Press, 1993)). While we only published the single volume, we have continued to compile an electronic county-level database for each general election since that time, which we sell to numerous institutions and organizations.

E.D.S. Inc. offers a wide variety of graphics services, from the creation of maps and posters to working with Census Bureau electronic mapping files. For every election year since 1988, E.D.S. Inc. has produced a full color poster of the nationwide election results within days after the November general elections. This poster can be seen in most congressional offices and the White House and is sold worldwide.

Election Data Services, Inc. has been viewed by clients, the press, academics, and the general public as a research facility and consulting firm dealing with many aspects of the electoral process. Because of our specialization in redistricting, we have been hired by state and local governments across the nation to provide software, database development services, and consulting services for the creation of districting plans and the analysis of many aspects of the redistricting process.

In addition, the company provides assistance in the election administration field to state and local jurisdictions in such areas as precinct management, voter registration systems, and voting equipment evaluation. Since 1980, the company has also maintained a county and township level database of which voting equipment is used in every jurisdiction in the nation. For the past several decades, Election Data Services has worked with the Rhode Island Secretary of State's office to assist their implementation of the Central Voter Registration System, particularly the components to assign voters to the correct precinct.

Kimball Brace

Kimball Brace has been president of Election Data Services, Inc. since he started the company in 1977. As a result, he has been involved in all of the past redistricting activities of the company, in most instances directing the focus and development of tasks, computer programs and research efforts as they relate to redistricting, reapportionment, the census, and election administration.

Mr. Brace frequently gives speeches to groups and organizations and participate in numerous conferences and panels on various aspects of apportionment, redistricting, and the census. Since the early 1980s, he has been a regular participant and speaker at annual and bi-annual meetings of the Task Force on Redistricting of the National Conference of State Legislatures ("NCSL"). He has also been on their faculty, as NCSL has conducted five regional "Get Ready for Redistricting" seminars each decade since 1980.

Mr. Brace was also appointed by the U.S. Secretary of Commerce to the 2010 Census Advisory Committee, a 20-person advisory board to the Director of the Census Bureau. Two months ago he was asked to be NCSL's representative on an on-going series of half-day small-group expert meetings, arranged by the Committee on National Statistics (CNSTAT), to delve deeply into and provide informal discussion/feedback with Census Bureau staff as they develop the differential privacy-based Disclosure Avoidance System for the 2020 census. He was also sent by the U.S. State Department and the International Foundation for Electoral Systems (IFES) to the Central Asian country of Kazakstan to present a three-day workshop on redistricting. He has also been regularly called upon by members of the press with questions on redistricting, reapportionment, the census, election administration issues, and politics in general.

Over the past four decades, Mr. Brace has also been involved in many aspects of the election administration process. This includes assisting federal, state, and local governments in such areas as voting equipment evaluation and selection, improvements to voter registration systems, and maintenance of precincts and street files. Beginning in 2008, he has been a poll worker in Prince William County, VA where he lives. Because the state holds elections every year and due to his interest in all aspects of election administration, he has graduated to being "chief judge" in the precincts to which he has been assigned.

In 2012 the county experienced long lines at the polls on Election Day and he was appointed to a 20-person task force by the County Board of Supervisors to investigate the cause of the problems. Because of his data background, he compiled and analyzed all the data collected by the task force and presented updates at their bi-weekly meetings over the 5-month life of the task force. With the retirement of the County's General Registrar (director of elections for the county), he was asked to take over the 11-person office. While he declined the full-time job offer, he did agree to serve as the Acting General Registrar for four months while the county conducted a search for a full-time replacement. He has continued to be actively involved in election administration issues within the county since that time.

Following the 2000 Presidential election, Mr. Brace was called by 40 to 50 reporters a day to provide information and comment on the election administration field around the nation. He was also interviewed by NBC, CBS, ABC and CNN numerous times about the 2000 election controversy. In addition, he was retained by the Gore-Lieberman Campaign Committee and provided expert witness testimony about voting equipment in the Bush v. Gore lower court evidentiary hearing on December 2, 2000. In 2004, 2006 and 2008, he was a consultant to NBC News on election administration matters and provided on-air commentary on election night.

References

Experience 1	
Company name. Contact name. Contact role at time of project. Contact phone. Contact email.	Rhode Island State Legislature Frank Anzeveno, Chief of Staff, State House, now retired. Worked closely with him in devising the legislative plan. fanzeveno@yahoo.com
City. State. Zip.	Providence, RI 02903 Now lives in Florida
	Currently working with Mr. Henry Kinch, Director of Joint Committee on

	Legislative Services (JCLS)
	Worked with State Legislature for each redistricting since 1983
Experience 2	
Company name. Contact name. Contact role at time of project. Contact phone. Contact email.	Illinois State Legislature Tim Mapes, Chief of Staff, House Overall control of process, now retired 217-801-2656 tdmapes@gmail.com
City. State. Zip	Springfield, IL 62711
	Worked with state legislature for each redistricting since 1980
Company name. Contact name. Contact role at time of project. Contact phone. Contact email	City of Chicago City Council Michelle Murphy, Finance Committee Project manager, main plan developer, now retired from city government 312-550-6487 Mmm1409@aol.com
City. State. Zip	Chicago, IL
Company name.	Michigan Independent Citizens

Election Data Services, Inc.

12/28/2021

Page 11

Contact name. Contact role at time of project. Contact phone. Contact email	Redistricting Commission Ms SuAnn Hammersmith, Executive Director 517-331-6386 HammersmithS@michigan.gov
City. State. Zip	Lansing, MI

Proposal Sheet – RFP #22-014

Date: December 27, 2021

I/We Election Data Services, Inc. the undersigned do hereby propose to furnish the City of Newport, Rhode Island with **Redistricting & Reprecincting Consulting Services**, in accordance with all terms and specifications contained herein.

1. \$ \$37,500.00 Lump Sum

Please submit Proposal Sheet in separate, sealed envelope.

Election Data Services, Inc.
NAME OF FIRM


SIGNATURE & TITLE President

6171 Emerywood Ct, Manassas, VA 20112
ADDRESS

Landline: 703-580-7267, Cell: 202-607-5857
TELEPHONE NUMBER

KBrace@electiondataservices.com or KBrace@aol.com
E-MAIL ADDRESS

NOTE:

All vendors are responsible for insuring that no **addenda** have been added to the original RFP document.

